



# **Planning and Transportation Committee Presentation**

**Date:** MONDAY, 8 OCTOBER 2018  
**Time:** 10.00 am  
**Venue:** LIVERY HALL - GUILDHALL

**Any drawings and details of materials submitted for approval will be available for inspection by Members in the Livery Hall from Approximately 9:30 a.m.**

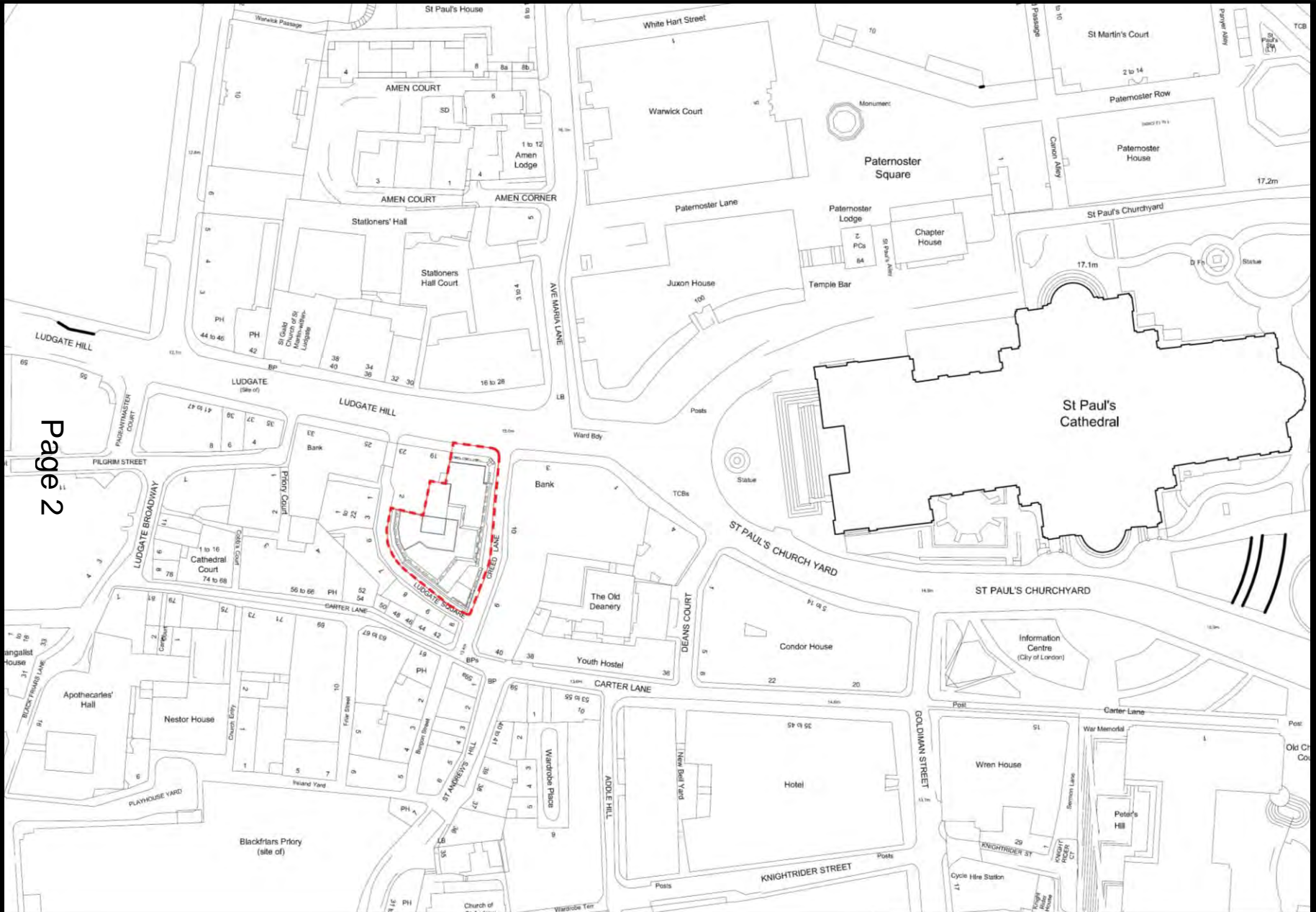
**John Barradell  
Town Clerk and Chief Executive**

This page is intentionally left blank

# Planning & Transportation Committee

8<sup>th</sup> October 2018

# Creed Court Hotel

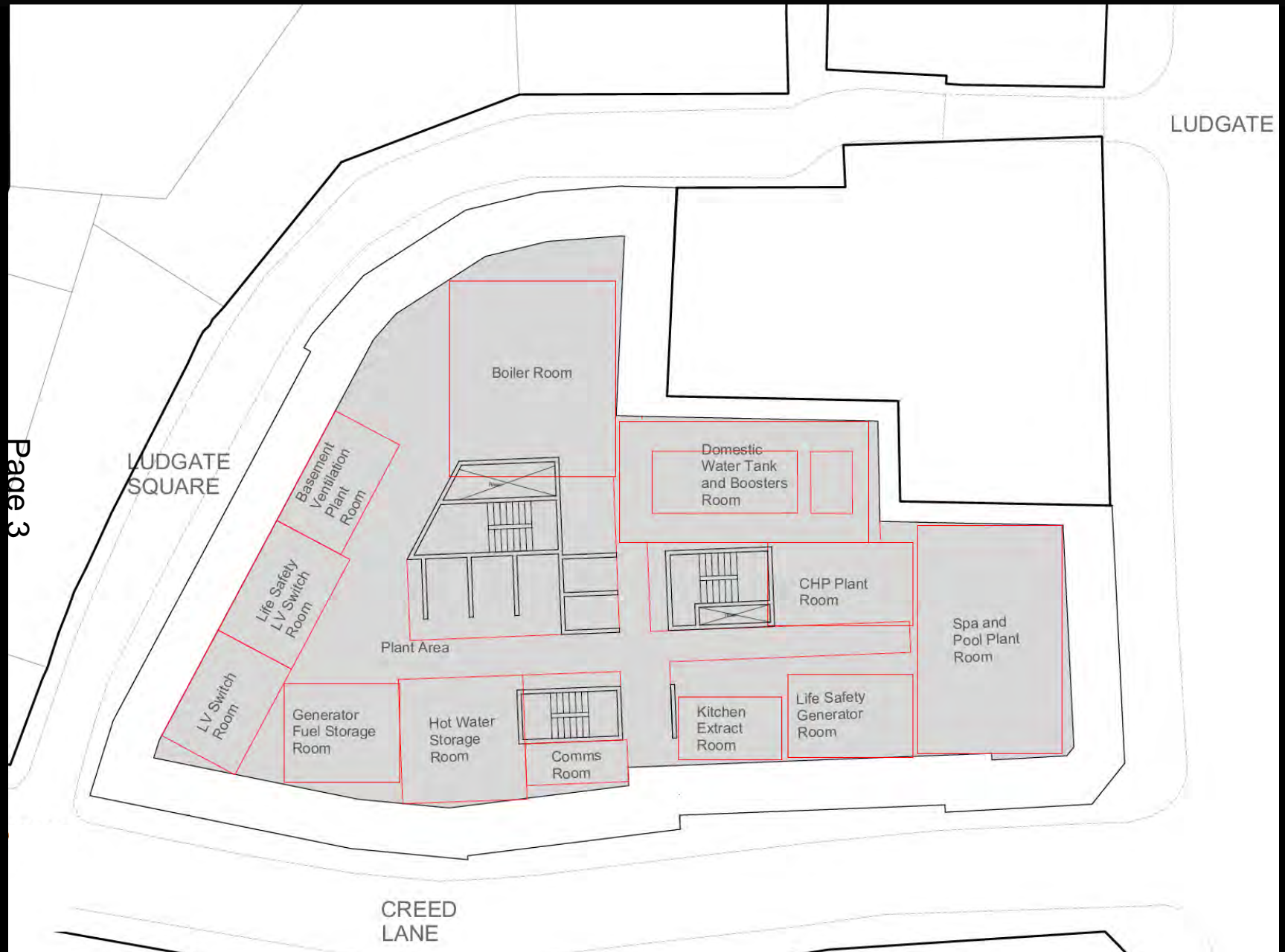


Site location plan



# Creed Court Hotel

Page 3



Consented lower ground floor - Level -3

# Creed Court Hotel

Page 4

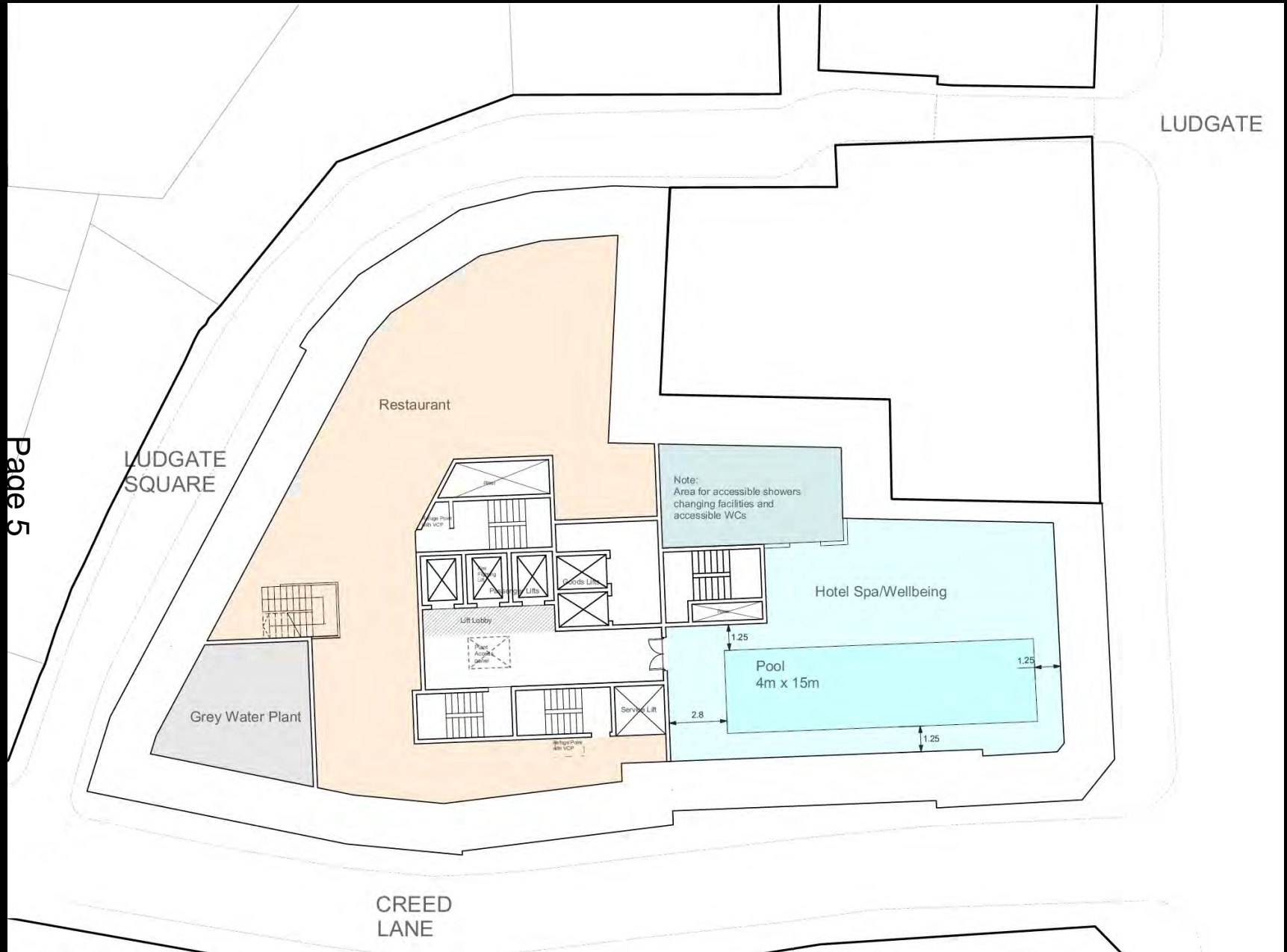
**BASEMENT -3 HAS BEEN REMOVED**



Proposed basement - Level -3

# Creed Court Hotel

Page 5



Consented lower ground floor - Level -2

# Creed Court Hotel

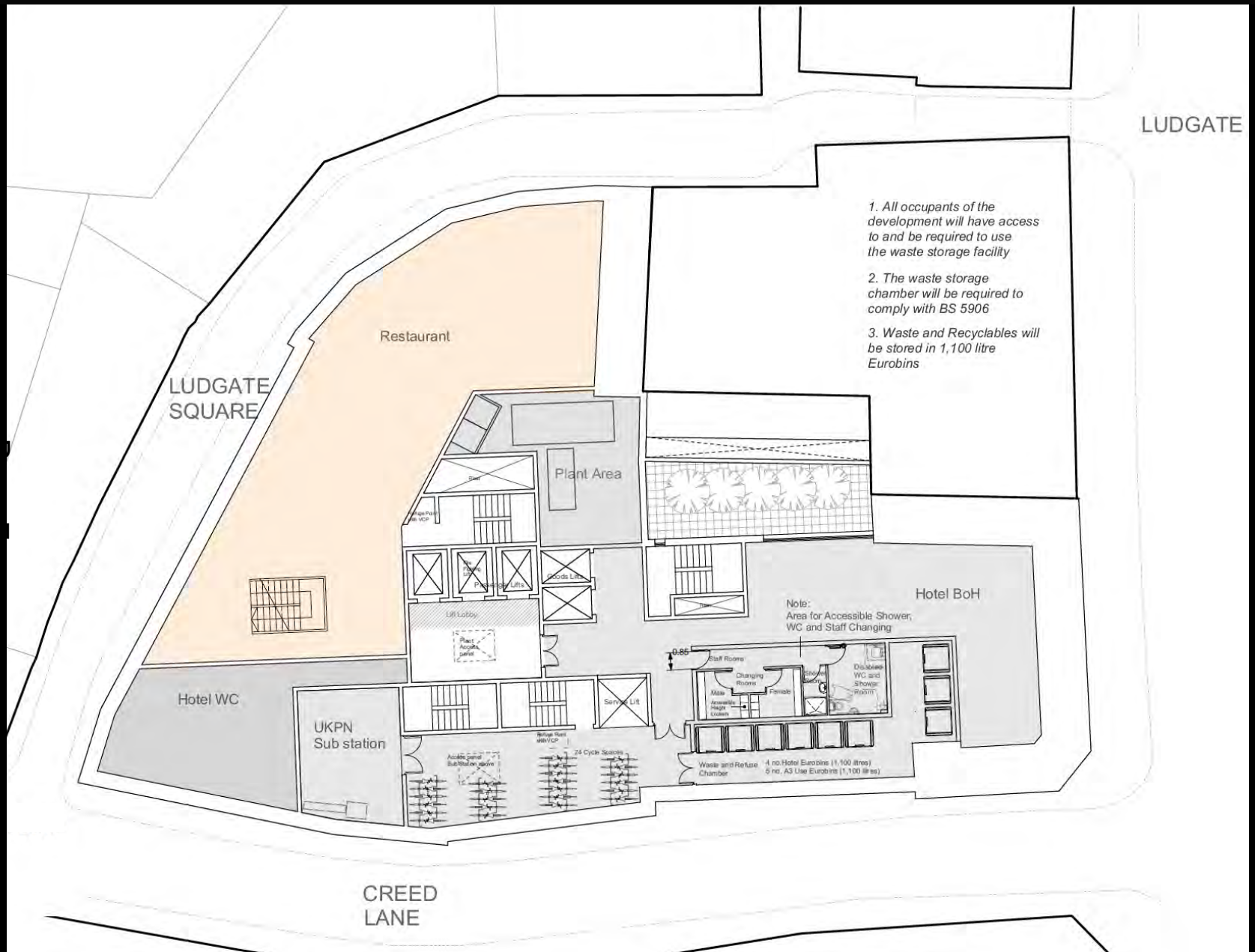
Page 6



Proposed basement - Level -2

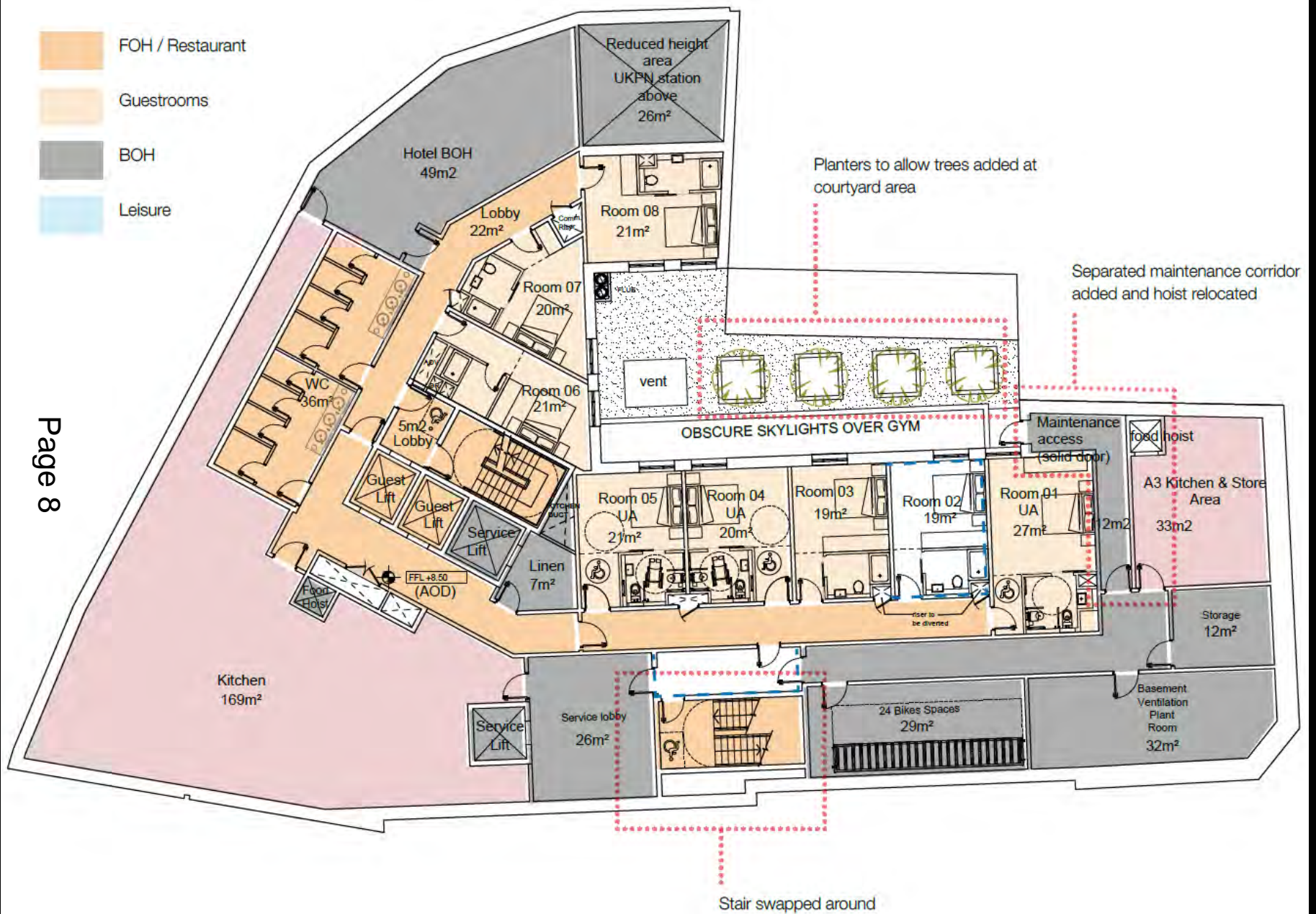


# Creed Court Hotel



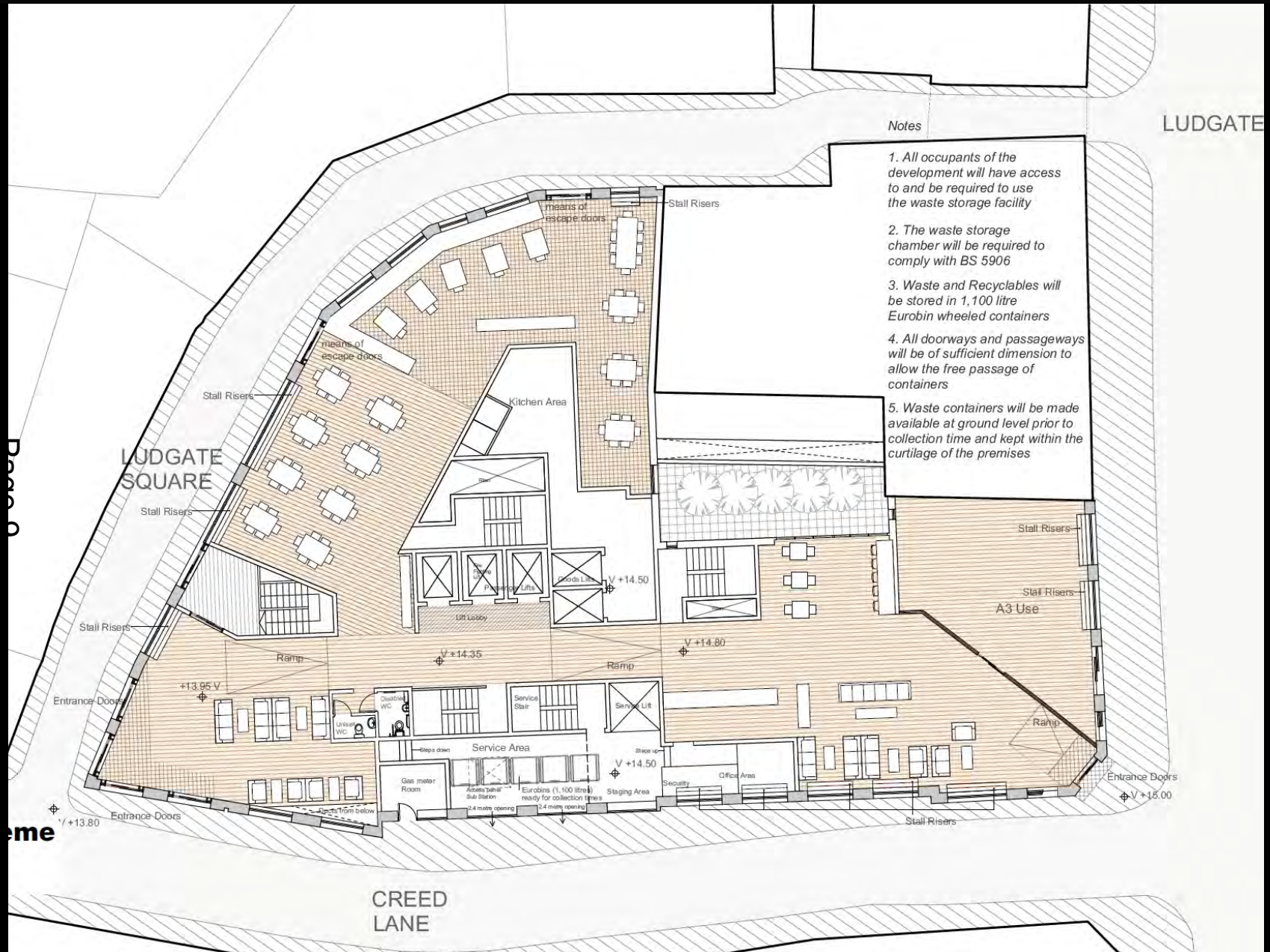
Consented lower ground floor – Level -1

# Creed Court Hotel





# Creed Court Hotel



Consented ground floor

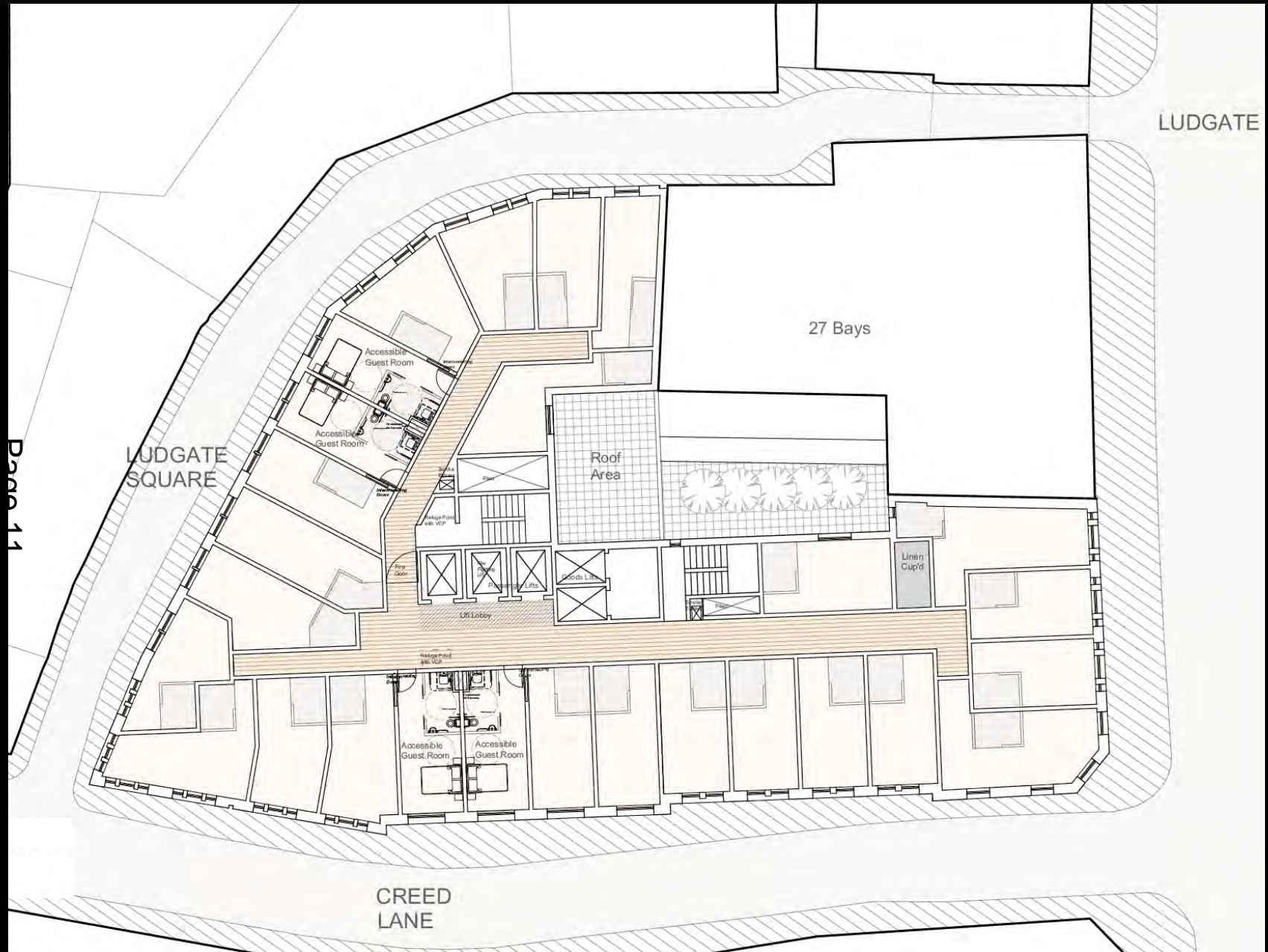


## Page 10



## Proposed ground floor

# Creed Court Hotel



Consented first floor



# Creed Court Hotel



Balconies to Ludgate Square added  
to match elevation

- FOH / Restaurant
- Guestrooms
- BOH
- Leisure

Page 12

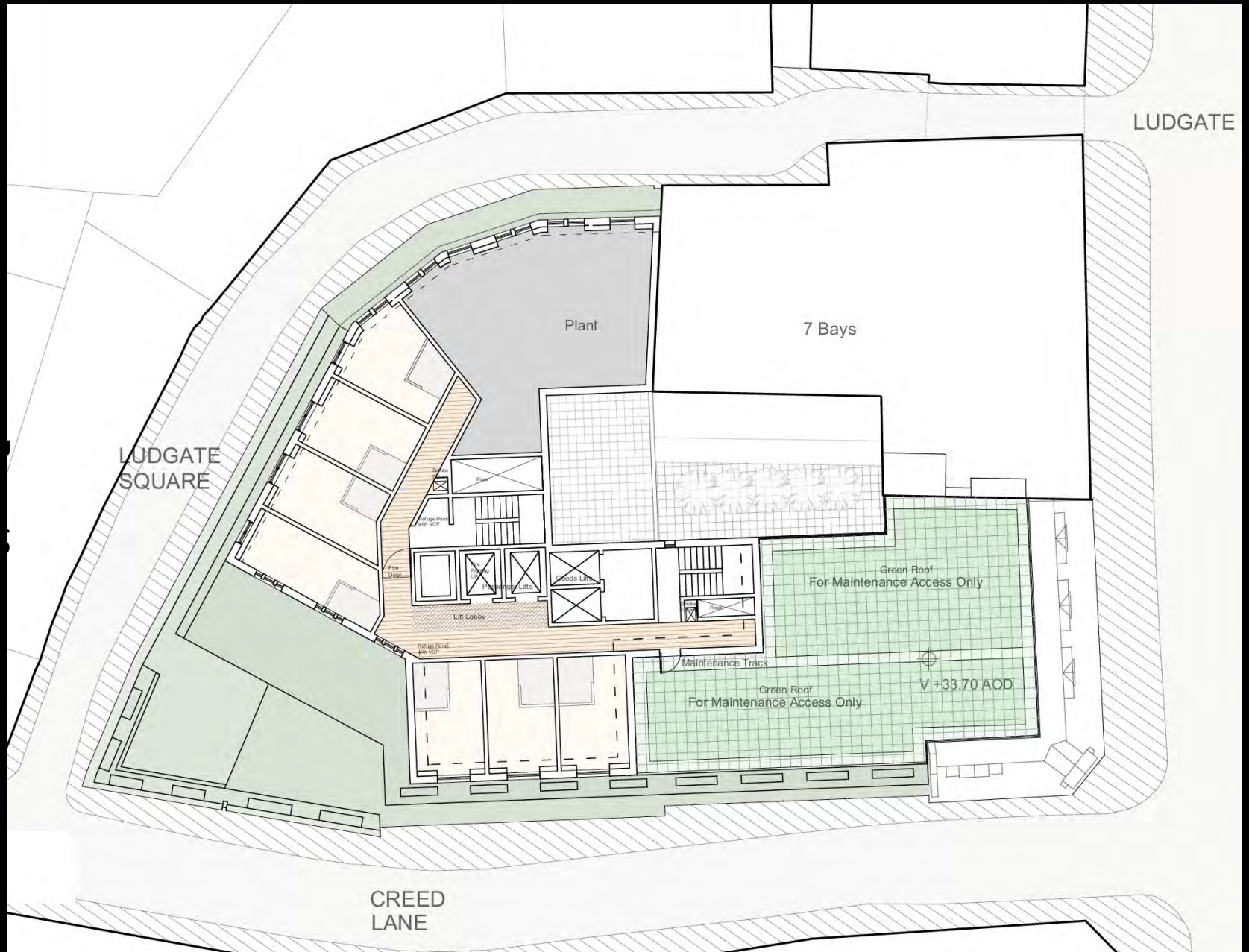
LUDGATE HILL



CREED  
LANE

Proposed first floor

# Creed Court Hotel

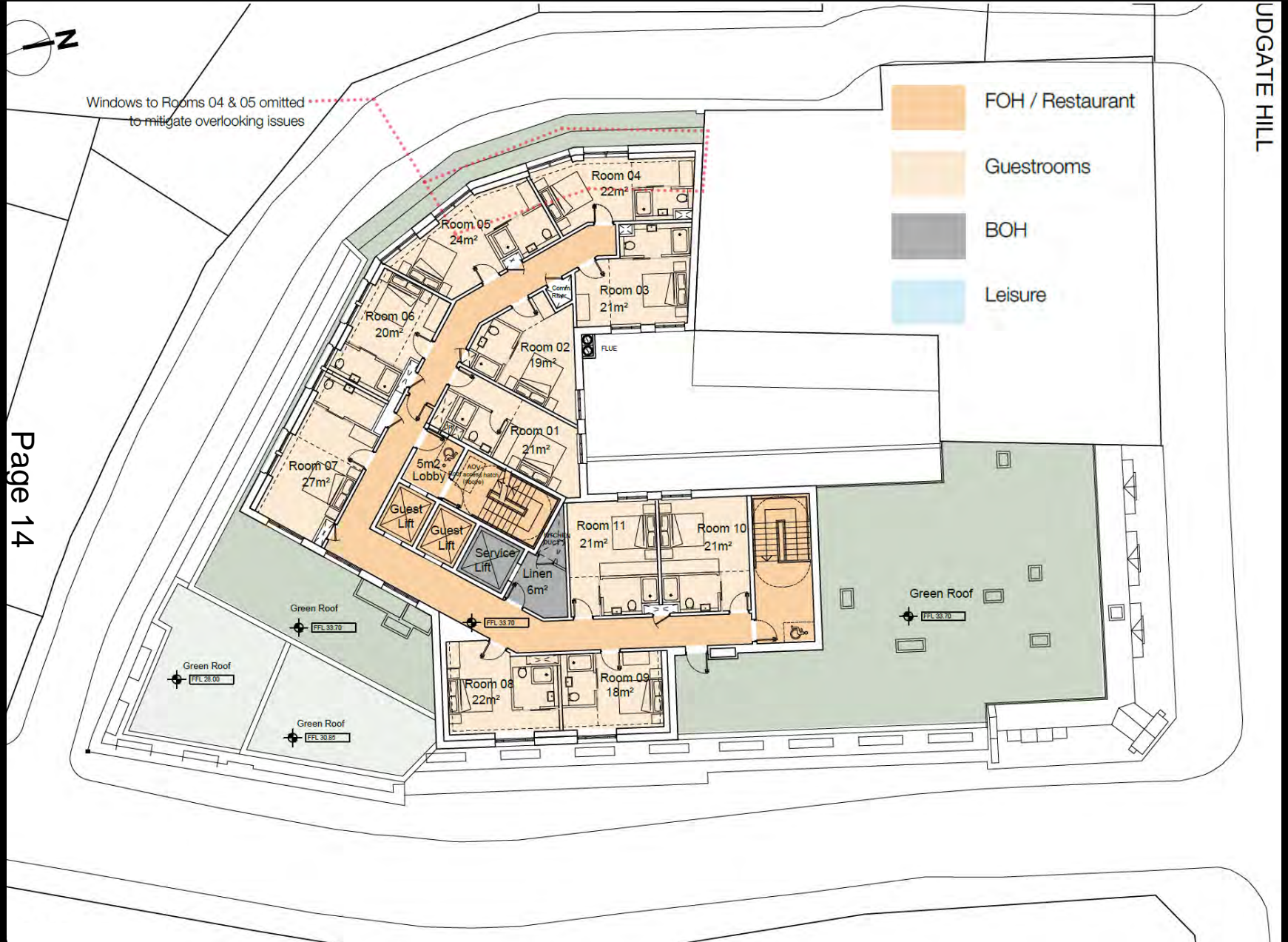


Consented sixth floor



# Creed Court Hotel

UDGATE HILL



# Creed Court Hotel

Page 15

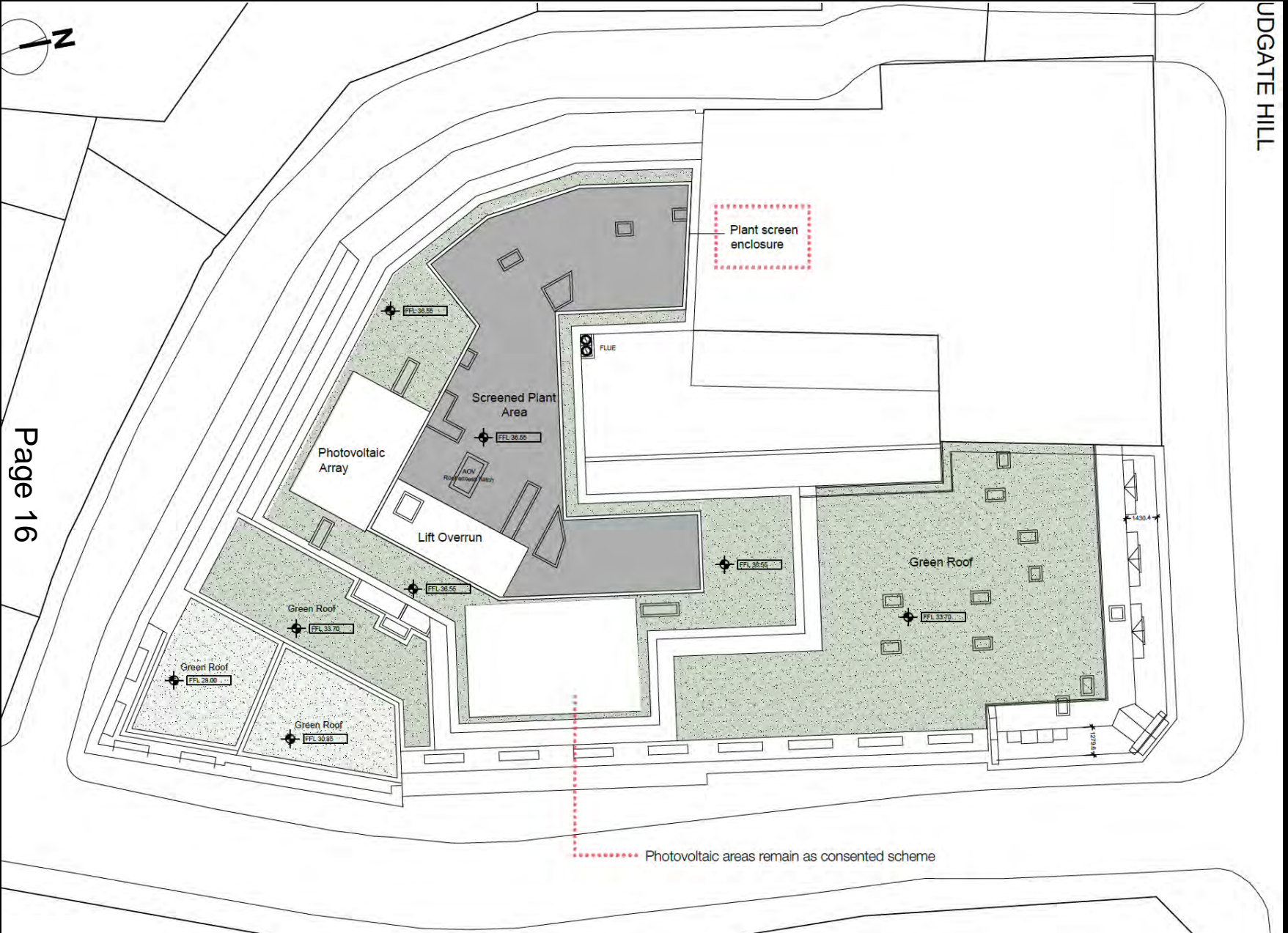


Consented roof plan



# Creed Court Hotel

UDGATE HILL



Proposed roof plan



# Creed Court Hotel



Consented Creed Lane elevation

# Creed Court Hotel



Proposed Creed Lane elevation

# Creed Court Hotel



Consented Ludgate Hill elevation

# Creed Court Hotel



Proposed Ludgate Hill elevation

# Creed Court Hotel



Consented Ludgate Square elevation



# Creed Court Hotel

Page 22



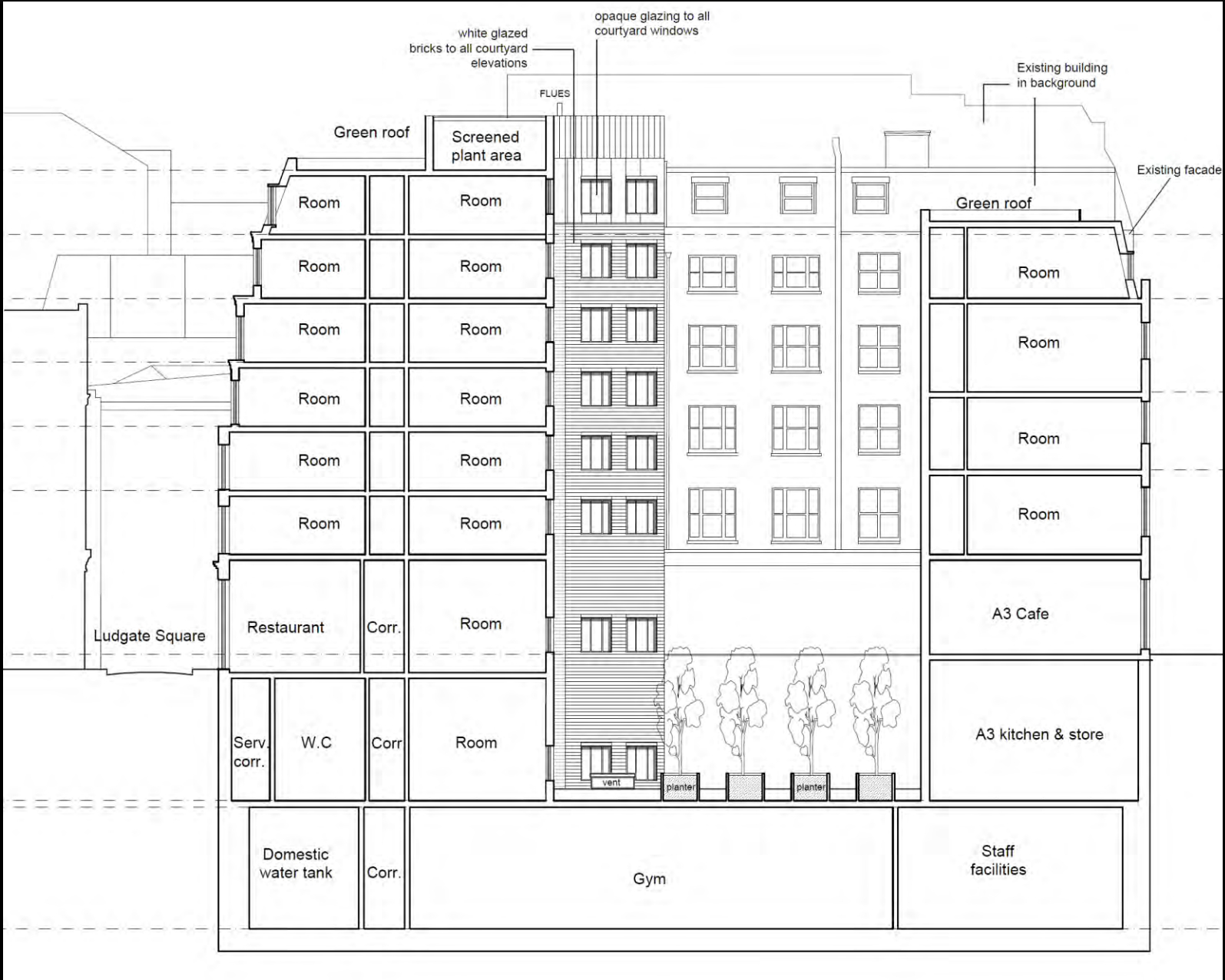
Proposed Ludgate Square elevation

## A.



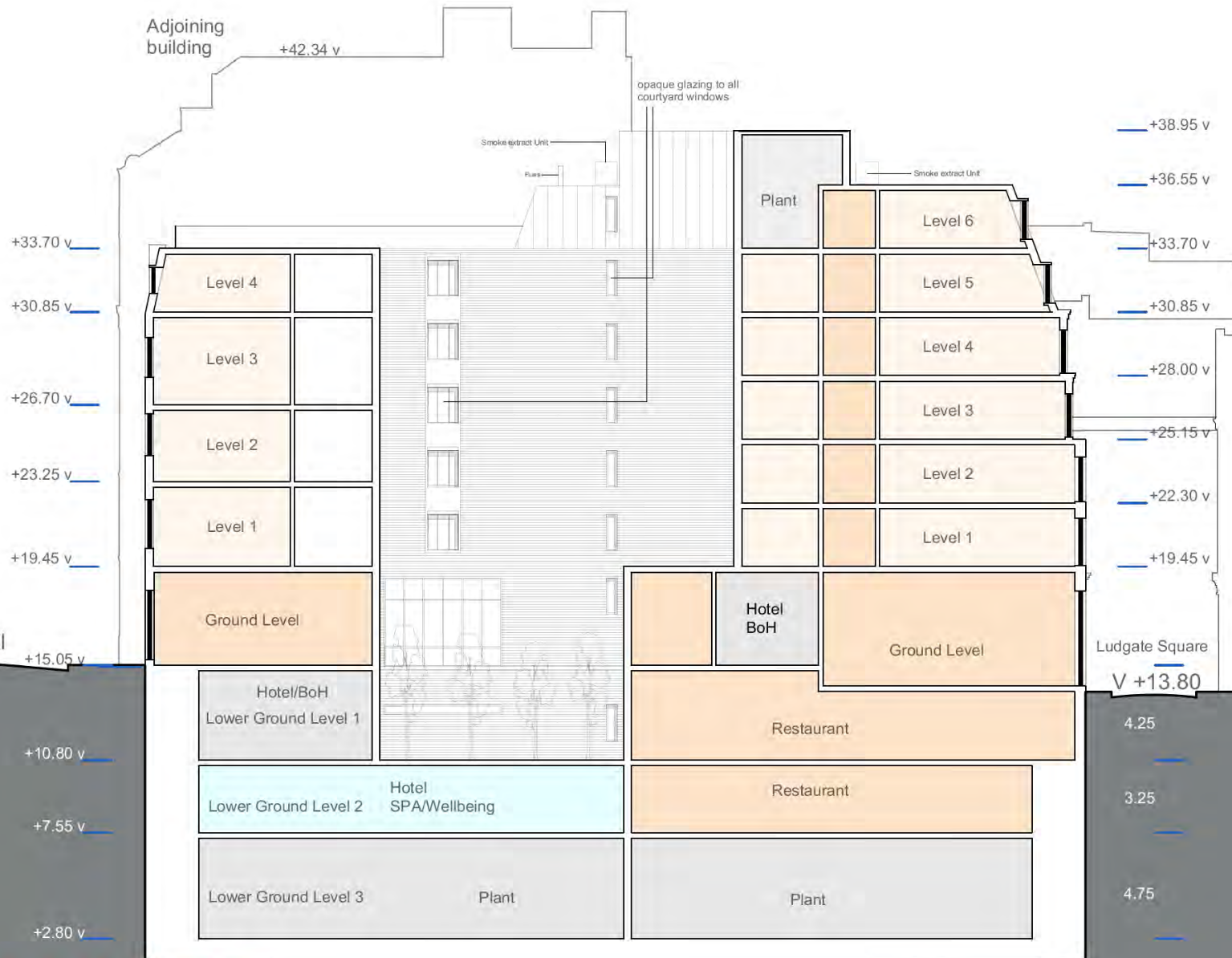
Consented section A-A

## Proposed section A-A



# Creed Court Hotel

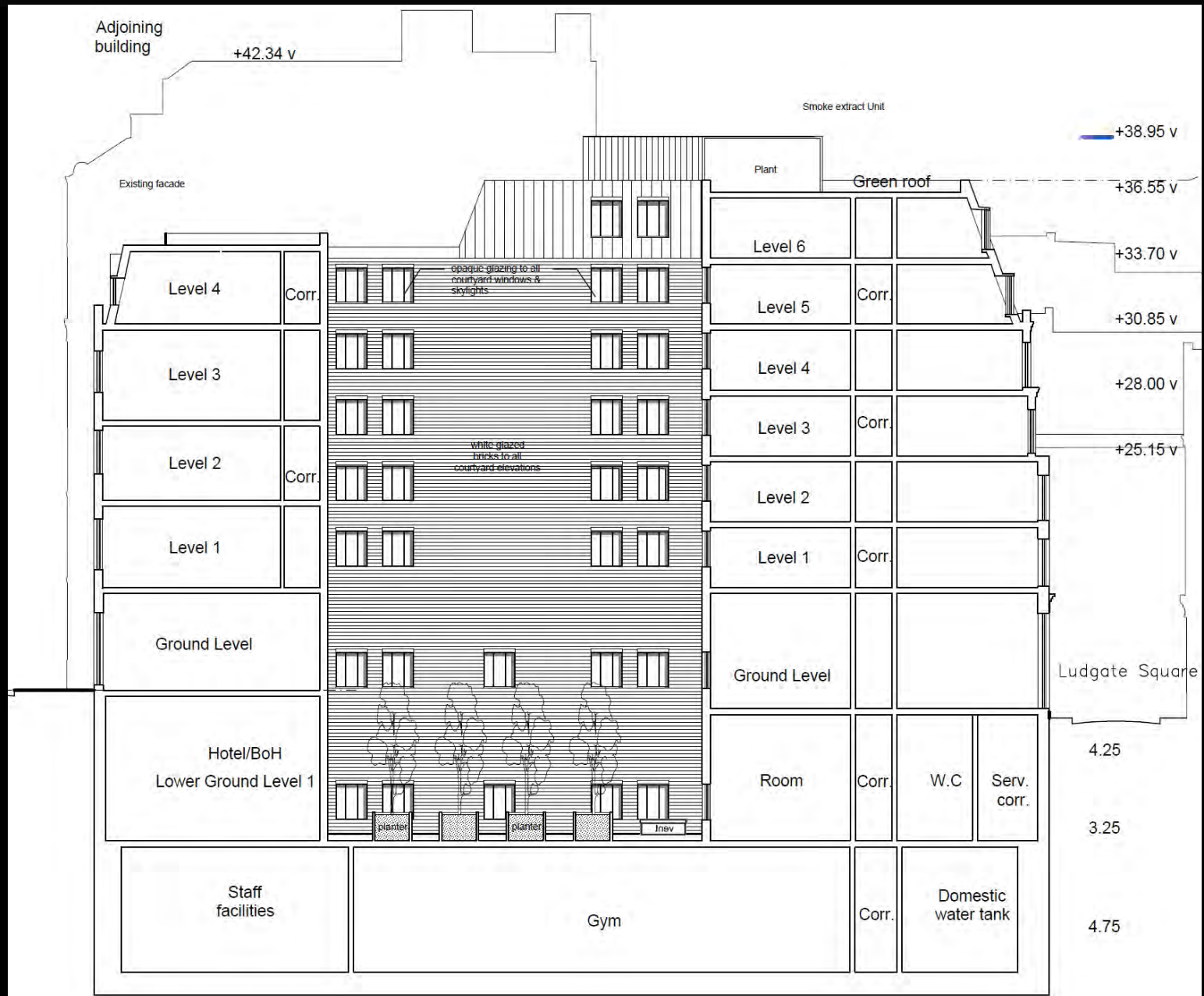
Page 25



Consented section B-B



# Creed Court Hotel



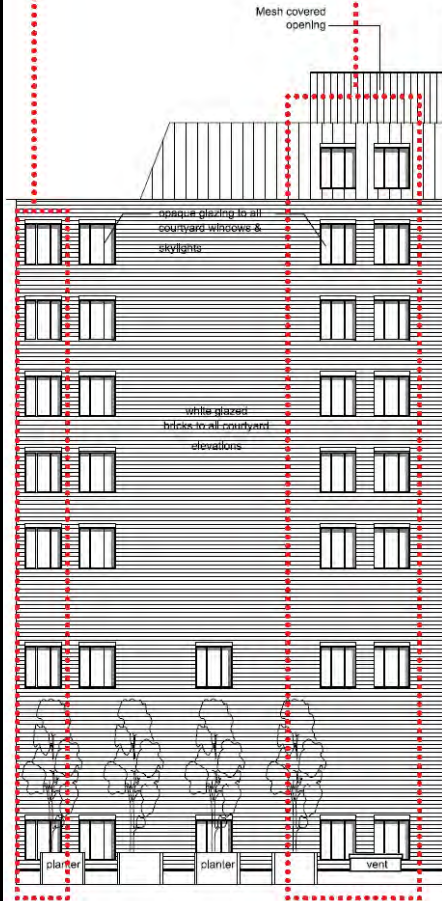
DMA Proposed section B-B



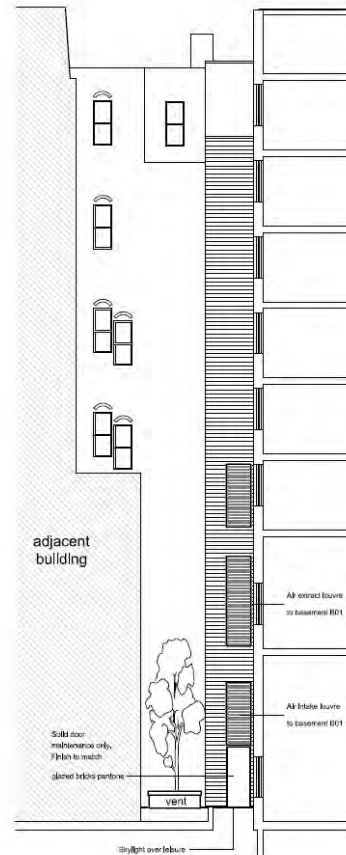
# Creed Court Hotel

We are proposing new windows to the courtyard rooms, But all glass will be opaque glass, to respect the neighbours privacy.

We are proposing new windows to the courtyard rooms, But all glass will be opaque glass, to respect the neighbours privacy.

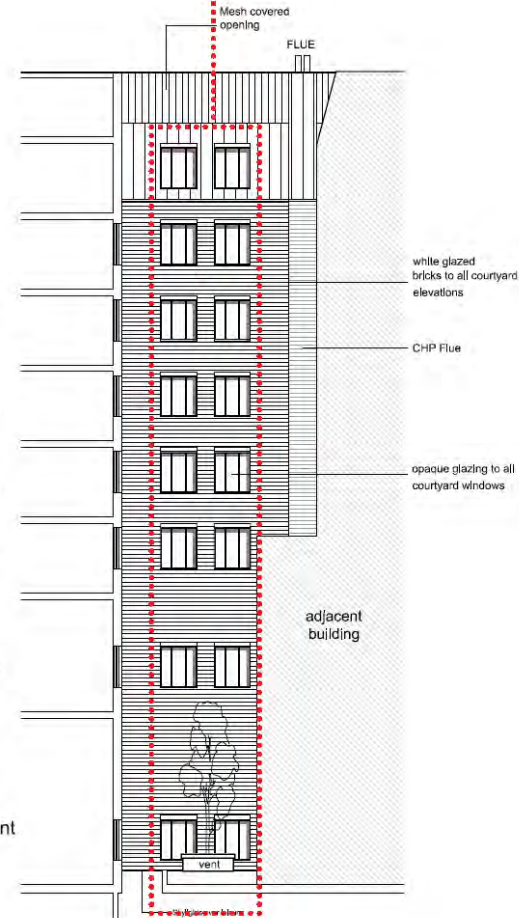


Courtyard Elevation AA'



Courtyard Elevation BB'

Plant  
Level 6  
Level 5  
Level 4  
Level 3  
Level 2  
Level 1  
Ground Level  
Basement B01  
Basement B02



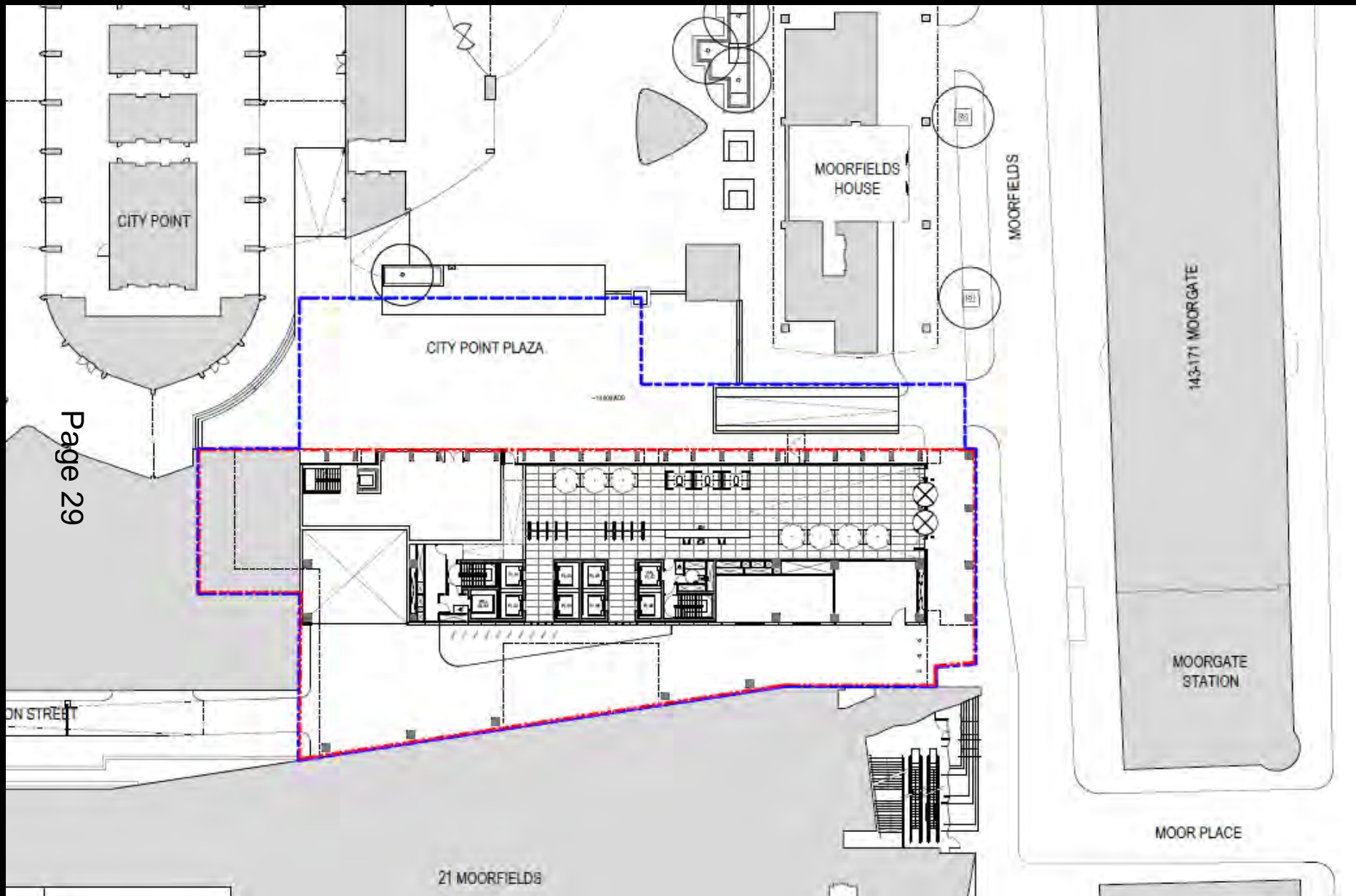
Courtyard Elevation CC'

Proposed internal courtyard elevations





# 45 Moorfields



Site location plan

# 45 Moorfields



Existing Building Photos

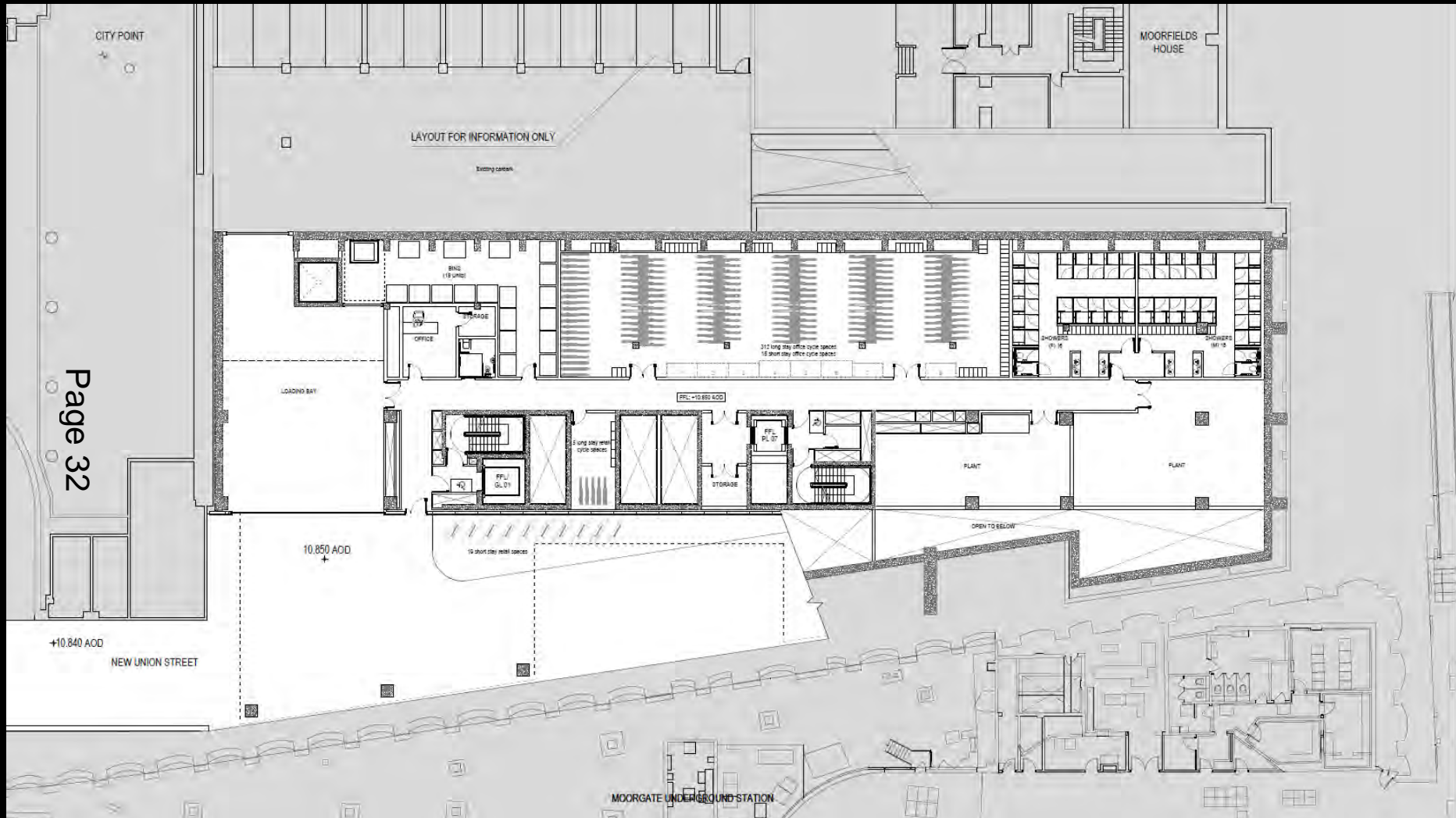


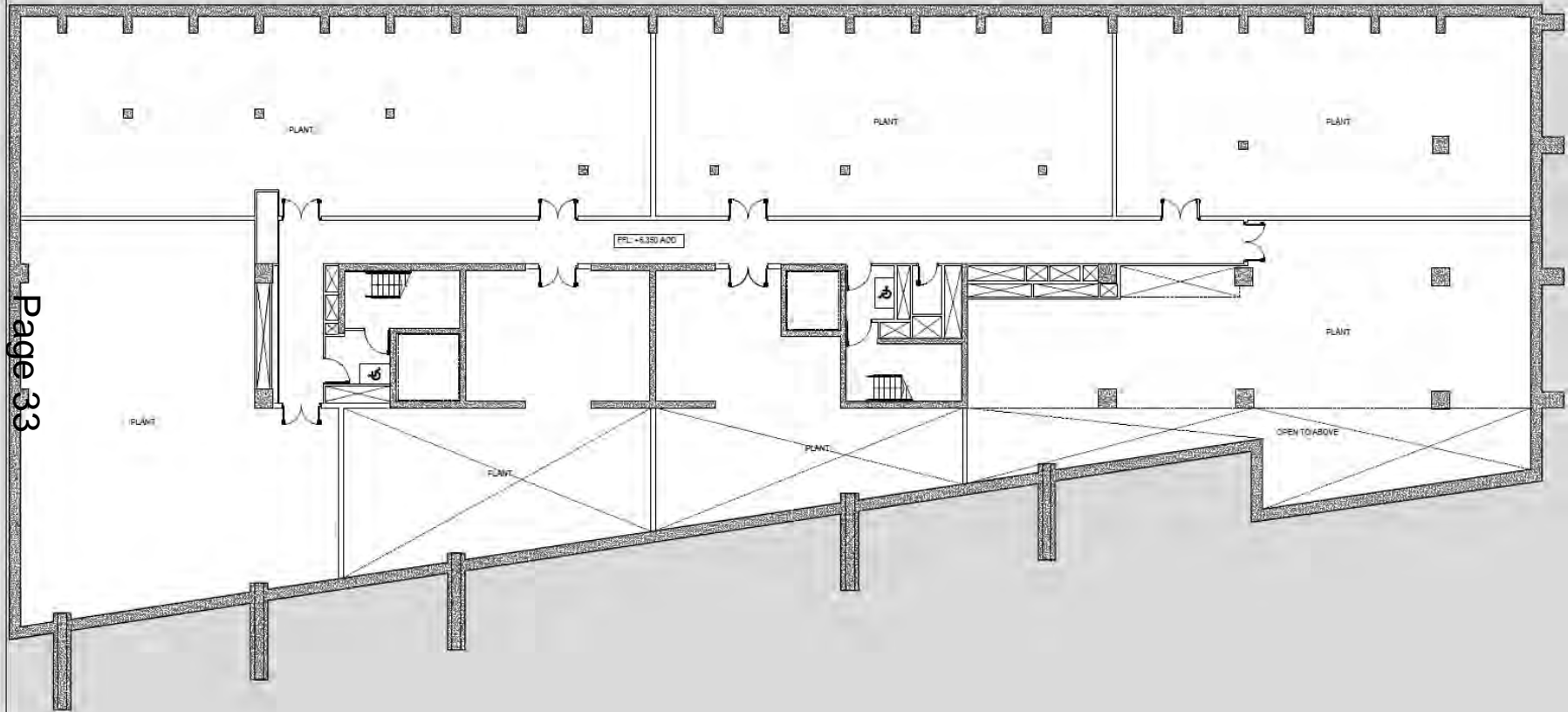
# 45 Moorfields





# 45 Moorfields



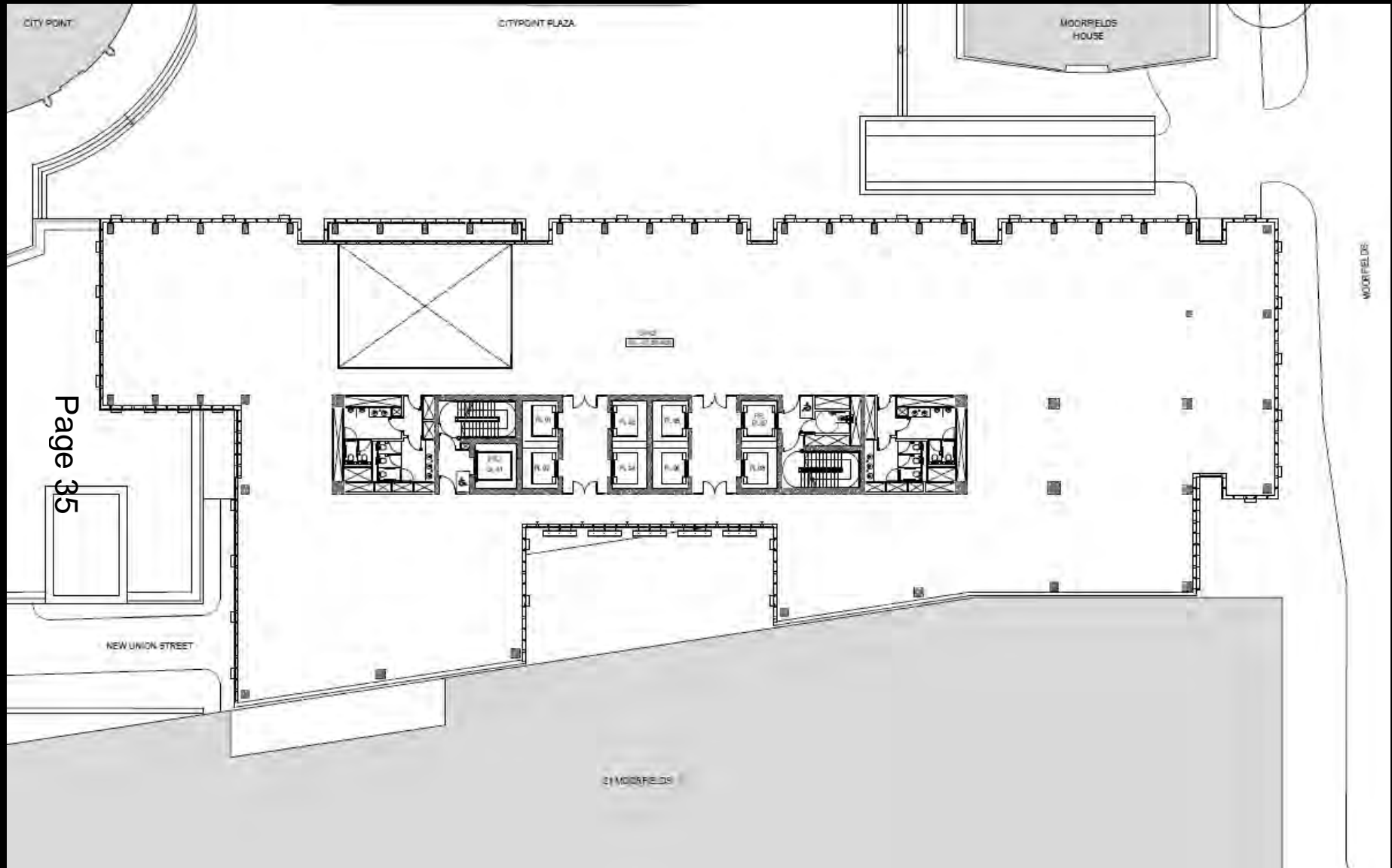


# 45 Moorfields



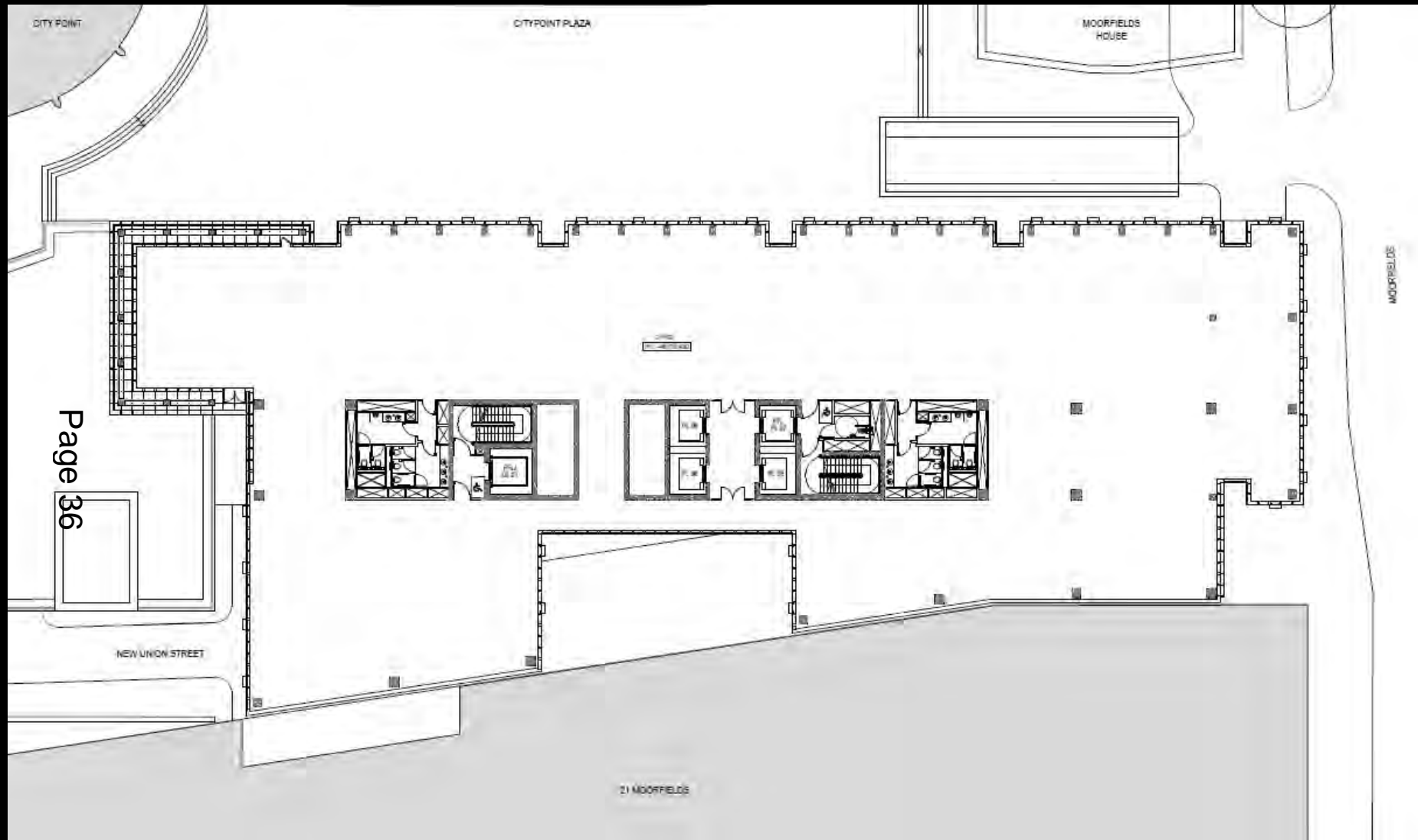


# 45 Moorfields



Typical floorplan Level 2-8 - Drawing P0206 Rev A

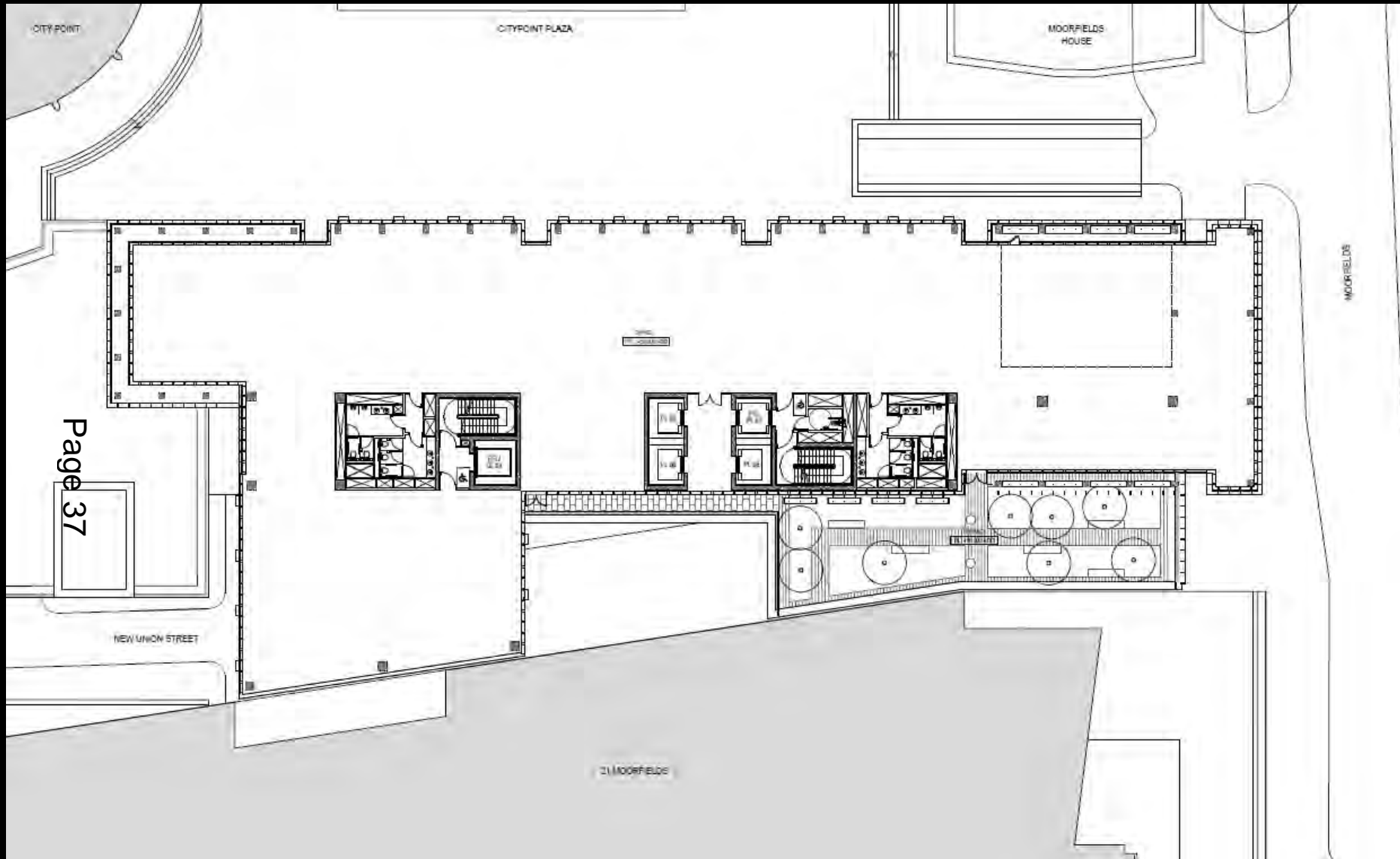
# 45 Moorfields



Page 36

Typical Floor Plan Levels 9 and 10 – Drawing Number – P0209 Rev A– This is where the building starts setting back on the western side

# 45 Moorfields



Typical Floor Plan Levels 11 and 12 - Drawing Number P0211 Rev A - this is where there is one external terrace

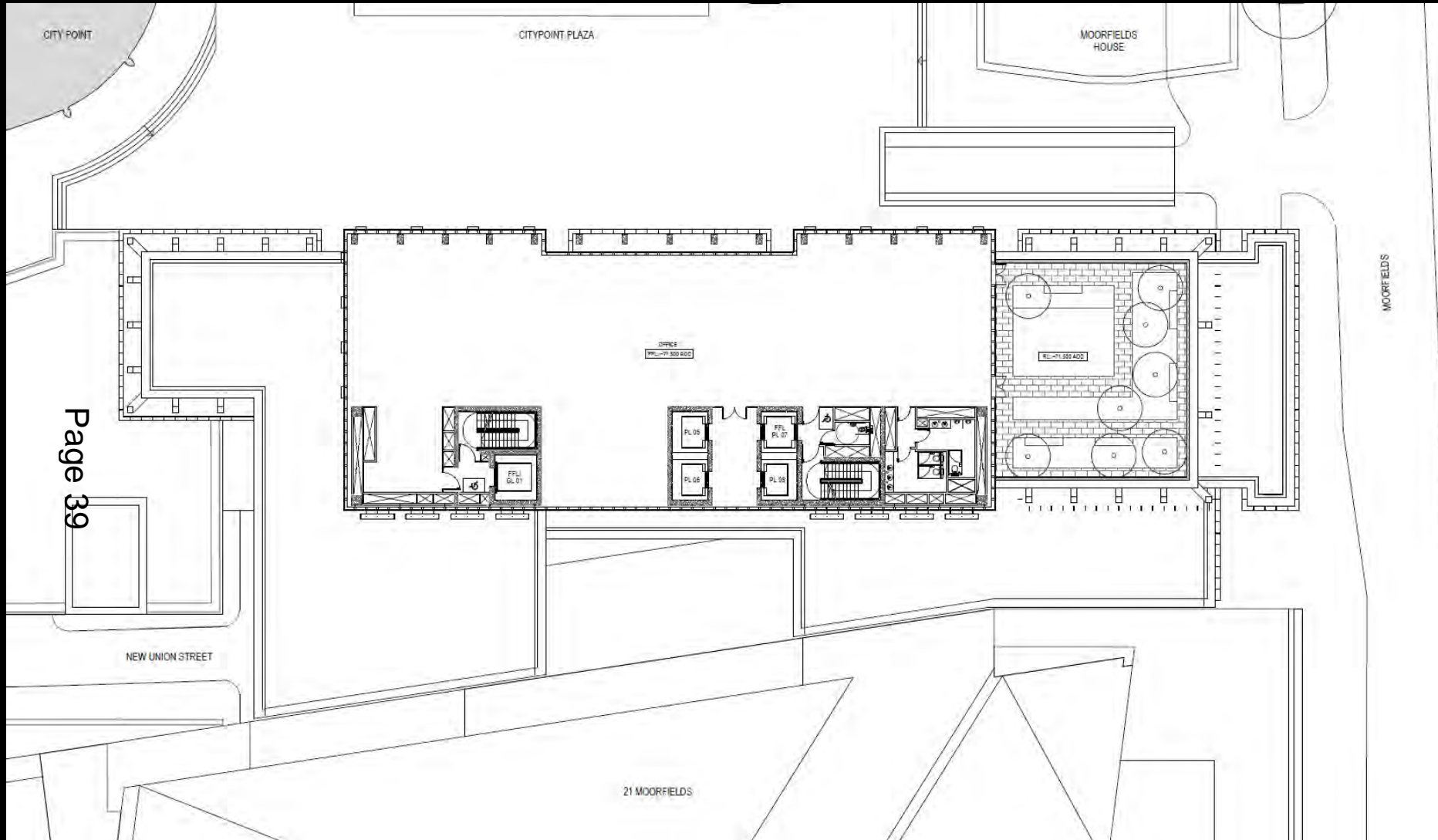


# 45 Moorfields



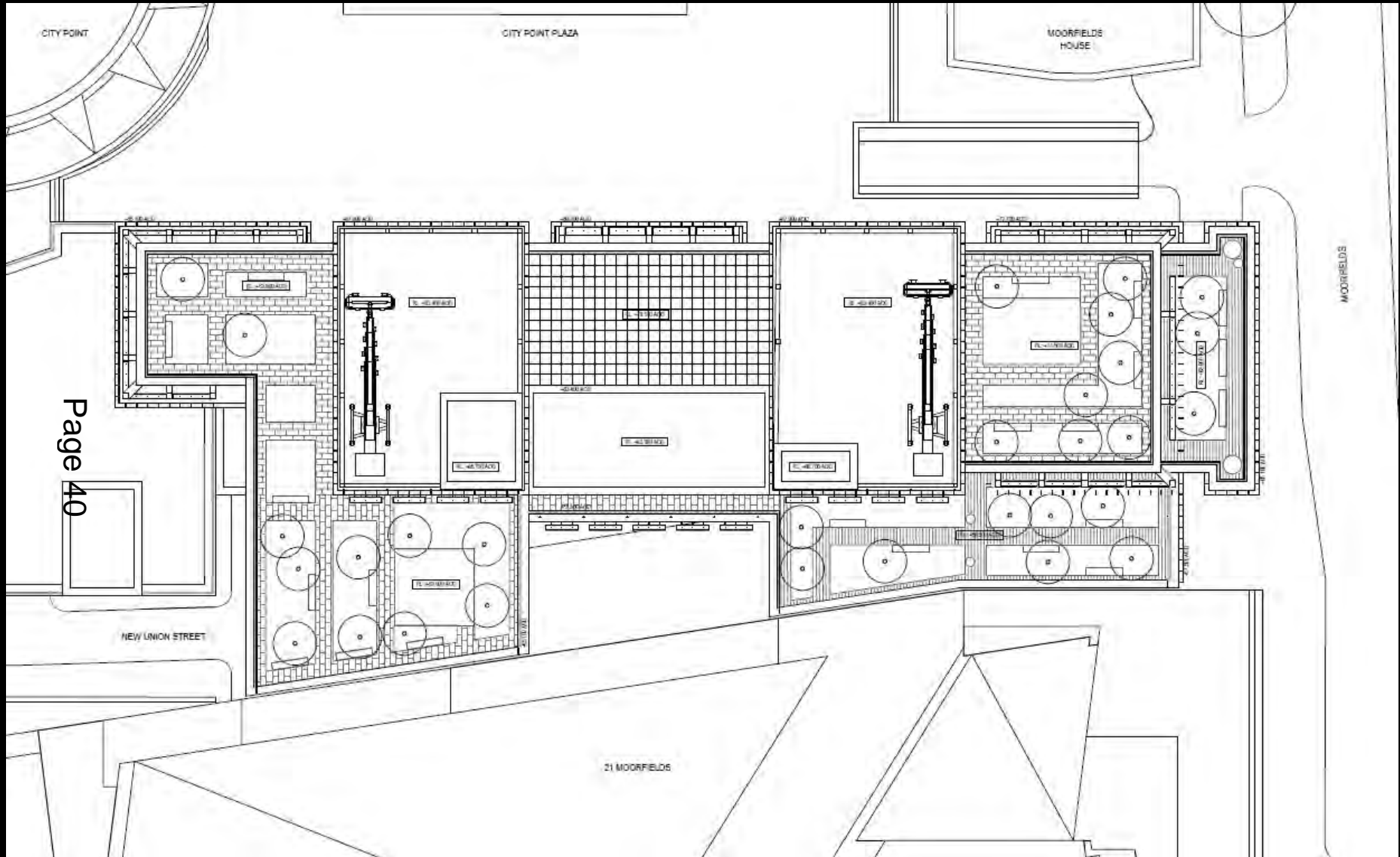
Typical Floor Plan Levels 13 and 14 – Drawing Number P0213 Rev A – this is where there are two external terraces on L13

# 45 Moorfields



Typical Floor Plan Levels 15-16 – Drawing Number – P215 RevA – this is where there one external terraces on L15

# 45 Moorfields



Roof Plan –drawing P0219 RevA – you can see the BMU and the roof terraces at various levels



# 45 Moorfields

Page 41



North Elevation in Context PO310

# 45 Moorfields



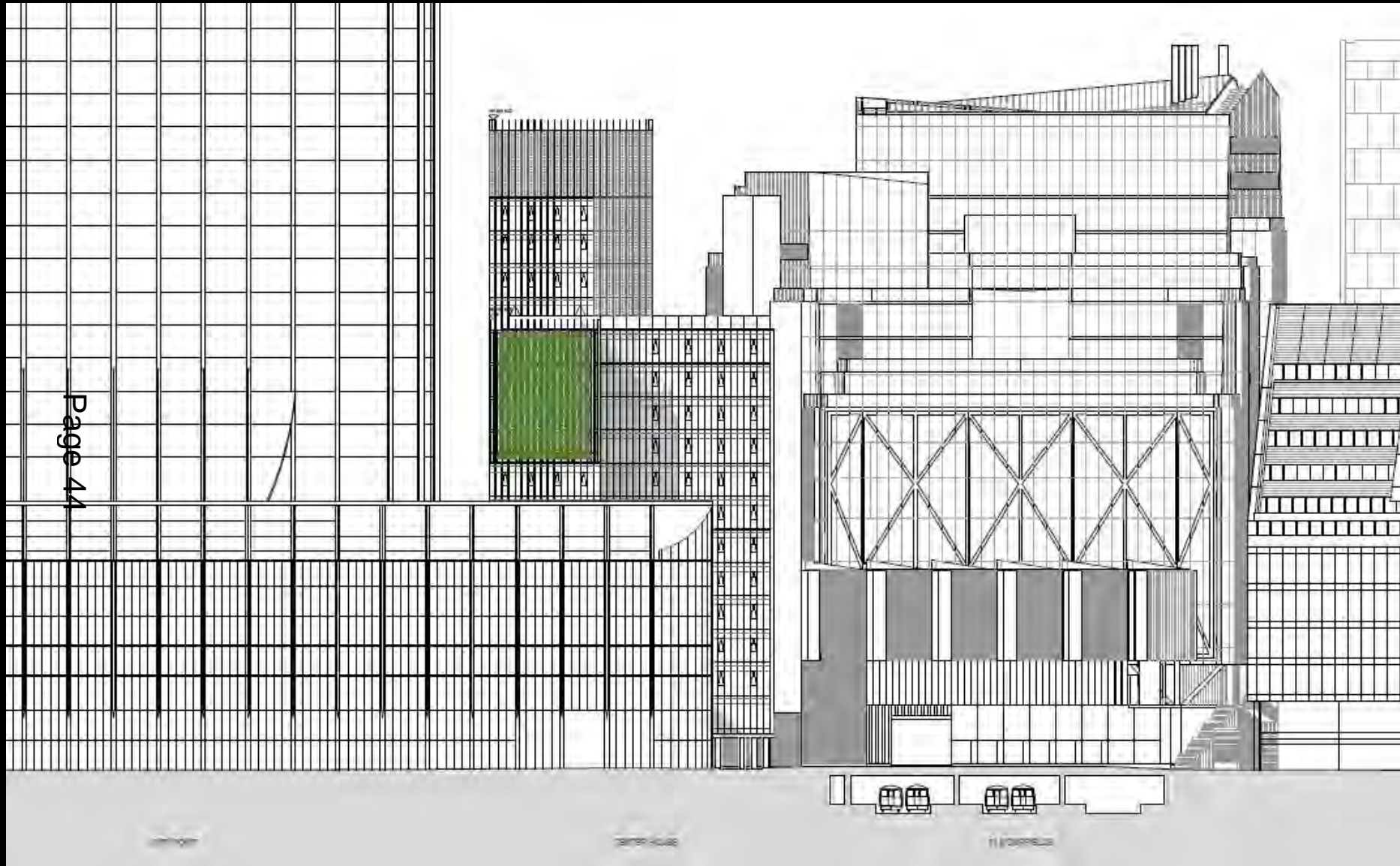
Moorfields Elevation (East Elevation) – P0311 RevA





# 45 Moorfields

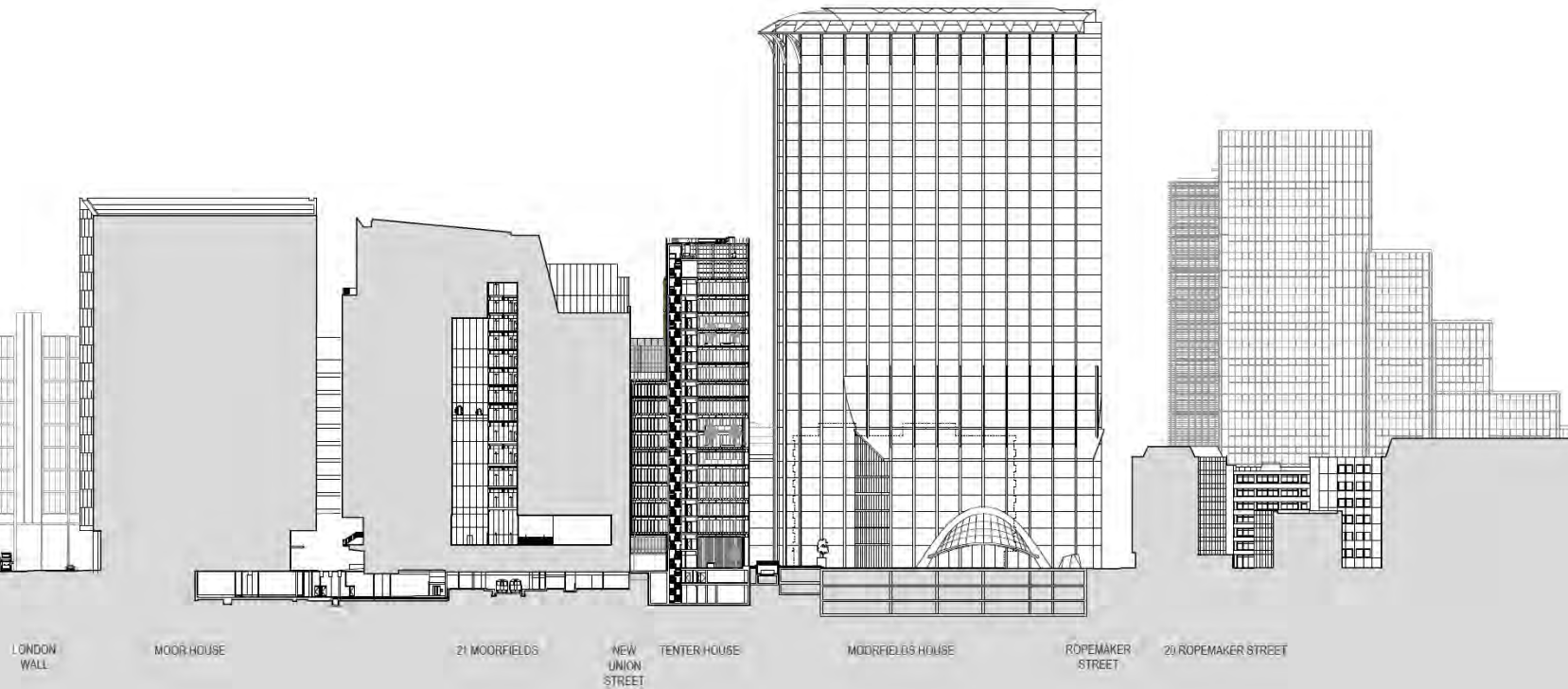
Page 44



West Elevation - P0313 Rev A

# 21 Moorfields

Page 45



North-South Section Through the Site (Drawing Number Section BB in Context - P0401 Rev A)

## 45 Moorfields



View of existing building from Ropemaker Street looking South – View Point 11



# 45 Moorfields



View of proposed building from Ropemaker Street looking South – View Point II

## 45 Moorfields

Page 48



View of existing and proposed building from Moorfields – View Point 16



# 45 Moorfields



View of existing building from Willoughby House – View Point 5



# 45 Moorfields



View of proposed building from Willoughby House – View Point 5

# 45 Moorfields

Page 51



Proposed view of New Union Street looking West – Add View Point 15 Proposed Version



# 45 Moorfields



## Servicing Strategy



# 45 Moorfields



Open garden terrace



Woodland garden terrace



Outdoor room terrace

Page 53



Greening on roof terraces

# 45 Moorfields



Page 54

Aerial view of proposed building looking south west



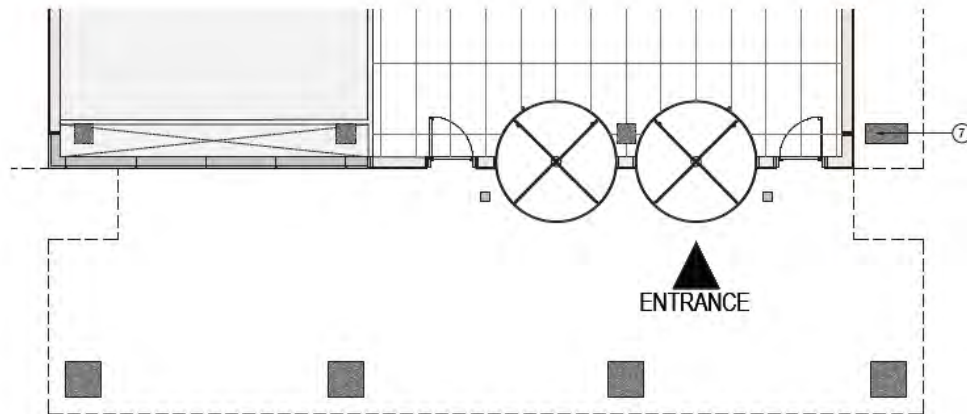
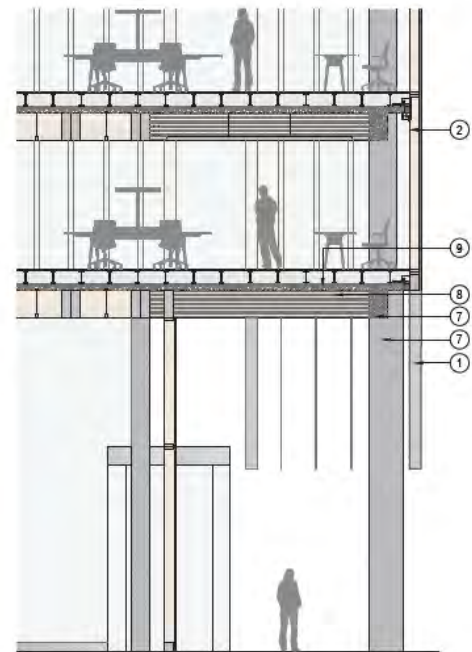
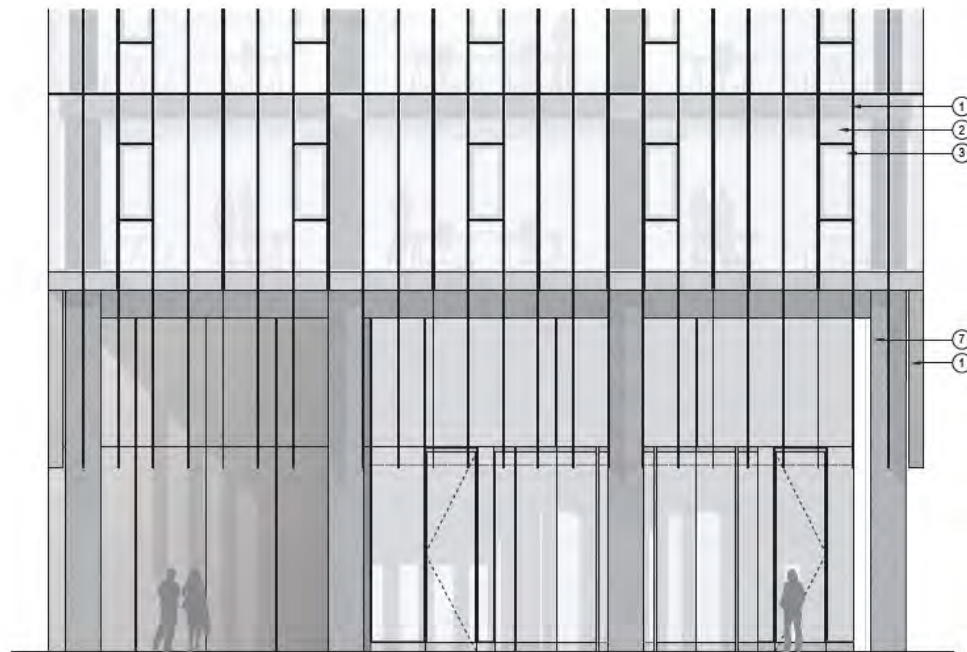
# 45 Moorfields



## Façade Design



# 45 Moorfields

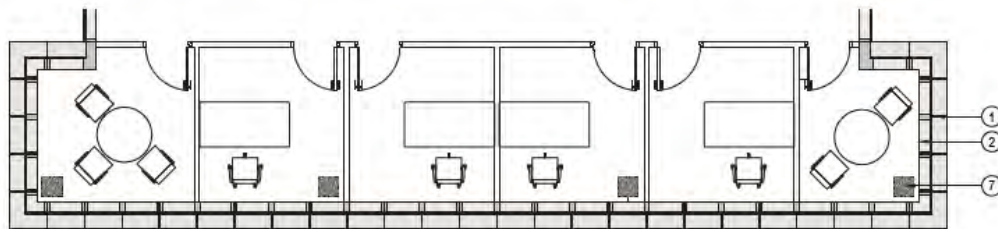
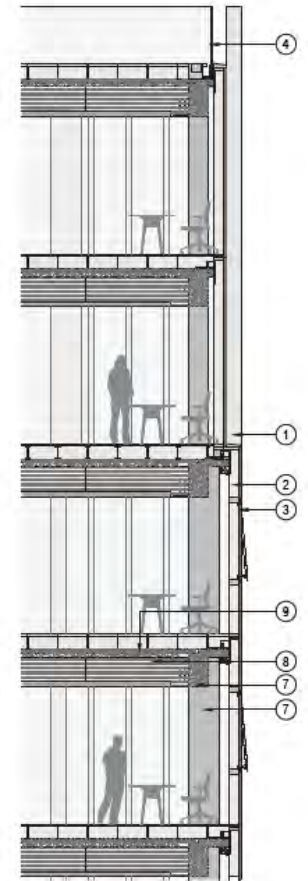
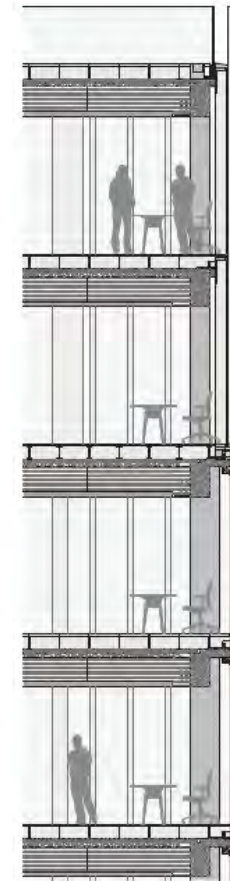
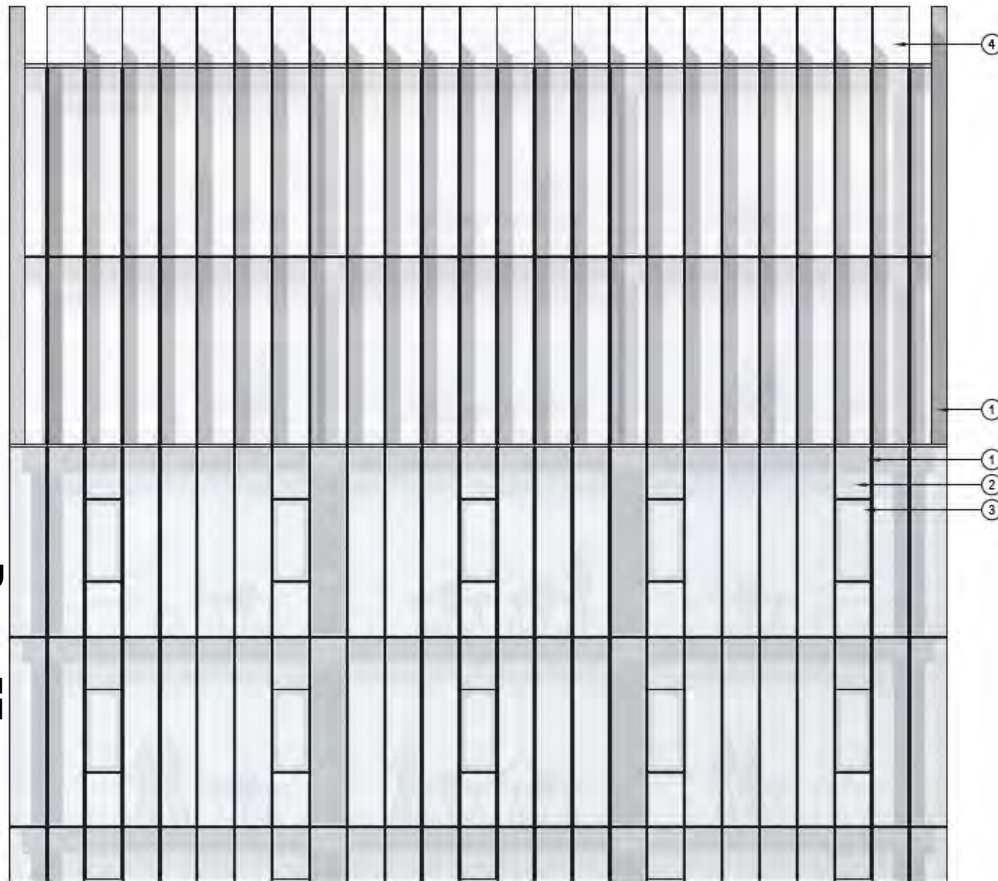


## Key to Materials

1. Anodised aluminium frame w/satin stainless steel finish
2. Untreated timber cladding panel with structurally glazed, high performance clear glazing
3. Top-hung, outward opening window
4. Clear frameless laminated glass balustrade
5. Satin stainless steel planter
6. Stainless steel trellis support to vertical planting
7. Exposed structural pre-cast concrete column and beam
8. Exposed glulam timber beam
9. In-situ concrete slab

# 45 Moorfields

Page 57



## Key to Materials

1. Anodised aluminium fine waist stainless steel finish
2. Untreated timber cladding panel with structurally glazed high performance clear glazing
3. Top-hung, outward opening window
4. Clear frameless laminated glass balustrade
5. Satin stainless steel planter
6. Stainless steel trellis support to vertical planting
7. Exposed structural pre-cast concrete column and beam
8. Exposed glulam timber beam
9. In-situ concrete slab

# 45 Moorfields

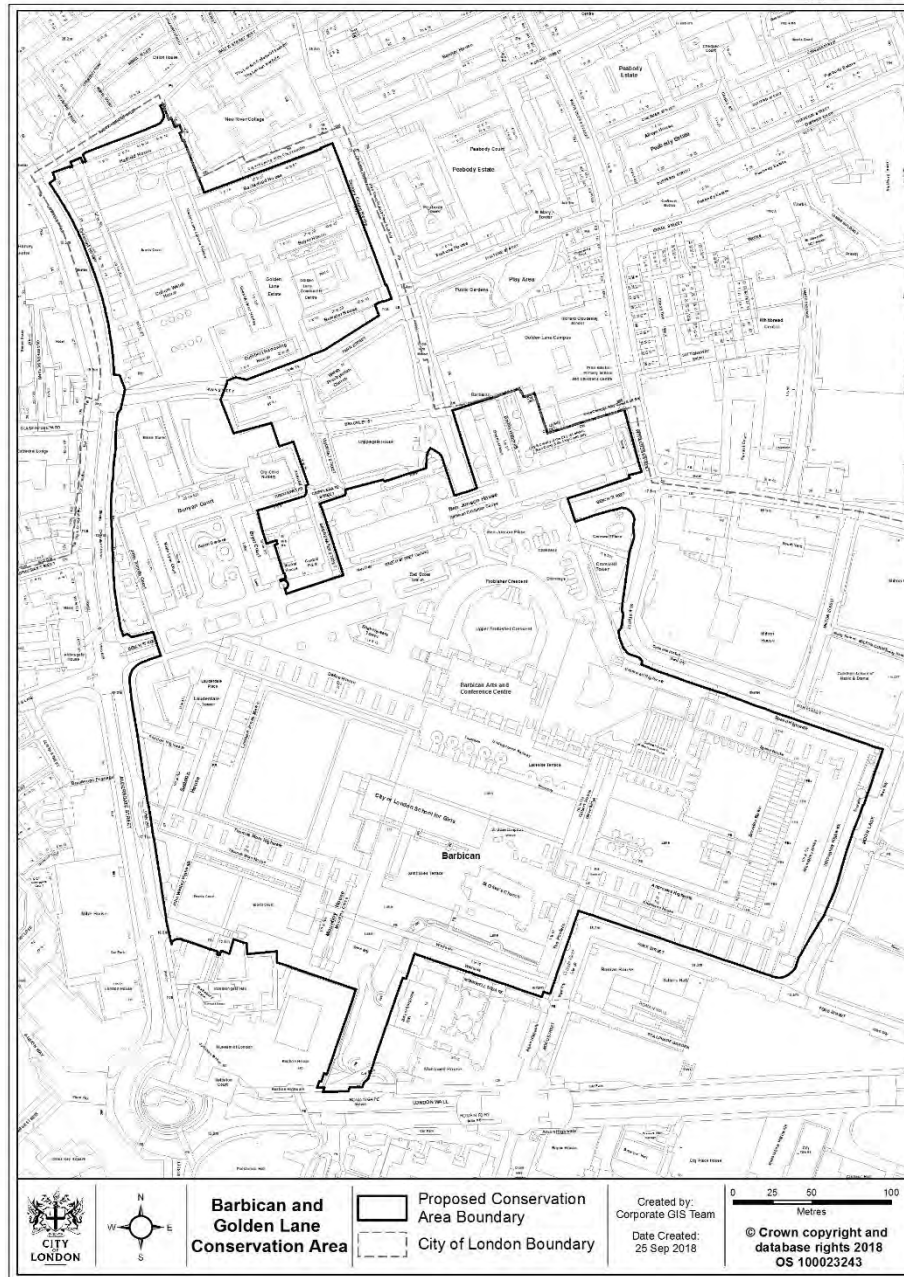






# Barbican and Golden Lane – Proposed Conservation Area

## Appendix 1



# Planning & Transportation Next Committee

30<sup>th</sup> October 2018



This page is intentionally left blank